



**Amphibian and Reptile Species List, NYS Breeding Bird Atlas Reports and
Correspondence with Natural Heritage Program**

List of Species Reported for the Patchogue, New York Quadrangle Topographic Map
during the New York Amphibian and Reptile Atlas Project Survey (1990-1999)

American bullfrog	<i>Rana catesbeiana</i>
common garter snake	<i>Thamnophis sirtalis</i>
common snapping turtle	<i>Chelydra serpentina</i>
eastern box turtle	<i>Terrapene carolina</i>
eastern milk snake	<i>Lampropeltis triangulum</i>
eastern ribbon snake	<i>Thamnophis sauritus</i>
eastern tiger salamander	<i>Ambystoma tigrinum</i>
Fowler's toad	<i>Bufo fowleri</i>
green frog	<i>Rana clamitans</i>
northern redback salamander	<i>Plethodon c. cinereus</i>
northern spring peeper	<i>Pseudacris crucifer</i>
smooth green snake	<i>Opheodrys vernalis</i>
wood frog	<i>Rana sylvatica</i>

NEW YORK STATE
DEPARTMENT OF
ENVIRONMENTAL CONSERVATION
S Breeding Bird Atlas



Block 6551A

2000-2005

Navigation Tools

- [Perform Another Search](#)
- [Show All Records](#)
- [Sort by Field Card Order](#)
- [Sort by Taxonomic Order](#)
- [View 1985 Data](#)

Block 6551A Summary

Total Species:	55
Possible:	7
Probable:	29
Confirmed:	19

Click on column heading to sort by that category.

List of Species Breeding in Atlas Block 6551A

Common Name	Scientific Name	Behavior Code	Date	NY Legal Status
American Crow	<i>Corvus brachyrhynchos</i>	FY	6/9/2001	Game Species
American Goldfinch	<i>Spinus tristis</i>	T2	6/9/2001	Protected
American Robin	<i>Turdus migratorius</i>	FY	6/10/2000	Protected
Baltimore Oriole	<i>Icterus galbula</i>	P2	6/25/2000	Protected
Barn Swallow	<i>Hirundo rustica</i>	P2	6/9/2001	Protected
Belted Kingfisher	<i>Megaceryle alcyon</i>	P2	6/25/2000	Protected
Black-and-white Warbler	<i>Mniotilta varia</i>	T2	6/9/2001	Protected
Black-capped Chickadee	<i>Poecile atricapillus</i>	FL	6/25/2000	Protected
Blue Jay	<i>Cyanocitta cristata</i>	FY	6/15/2003	Protected
Blue-gray Gnatcatcher	<i>Polioptila caerulea</i>	FL	6/9/2001	Protected
Blue-winged Warbler	<i>Vermivora pinus</i>	D2	6/8/2002	Protected
Brown Creeper	<i>Certhia americana</i>	X1	4/14/2002	Protected
Brown Thrasher	<i>Toxostoma rufum</i>	FY	6/25/2000	Protected
Brown-headed Cowbird	<i>Molothrus ater</i>	P2	6/9/2001	Protected
Canada Goose	<i>Branta canadensis</i>	P2	4/14/2002	Game Species
Carolina Wren	<i>Thryothorus ludovicianus</i>	P2	4/14/2002	Protected
Cedar Waxwing	<i>Bombycilla cedrorum</i>	P2	6/25/2000	Protected
Chipping Sparrow	<i>Spizella passerina</i>	FY	6/8/2002	Protected
Common Grackle	<i>Quiscalus quiscula</i>	FL	6/9/2001	Protected
Common Yellowthroat	<i>Geothlypis trichas</i>	FY	6/25/2000	Protected
Downy Woodpecker	<i>Picoides pubescens</i>	B2	4/14/2002	Protected
Eastern Bluebird	<i>Sialia sialis</i>	P2	6/8/2002	Protected
Eastern Kingbird	<i>Tyrannus tyrannus</i>	NE	6/25/2000	Protected
Eastern Screech-Owl	<i>Megascops asio</i>	X1	2/20/2002	Protected
Eastern Towhee	<i>Pipilo erythrophthalmus</i>	FY	6/10/2000	Protected
Eastern Wood-Pewee	<i>Contopus virens</i>	P2	6/25/2000	Protected
European Starling	<i>Sturnus vulgaris</i>	ON	6/25/2000	Unprotected
Field Sparrow	<i>Spizella pusilla</i>	FY	6/9/2001	Protected

Crow	<i>Corvus ossifragus</i>	P2	4/14/2002	Protected
Gray Catbird	<i>Dumetella carolinensis</i>	P2	6/25/2000	Protected
Great Crested Flycatcher	<i>Myiarchus crinitus</i>	ON	6/10/2000	Protected
Hairy Woodpecker	<i>Picoides villosus</i>	FY	6/9/2001	Protected
House Sparrow	<i>Passer domesticus</i>	P2	6/25/2000	Unprotected
Mallard	<i>Anas platyrhynchos</i>	P2	6/25/2000	Game Species
Mourning Dove	<i>Zenaida macroura</i>	P2	6/10/2000	Protected
Northern Bobwhite	<i>Colinus virginianus</i>	T2	6/8/2002	Game Species
Northern Cardinal	<i>Cardinalis cardinalis</i>	FY	6/9/2001	Protected
Northern Flicker	<i>Colaptes auratus</i>	T2	6/9/2001	Protected
Northern Mockingbird	<i>Mimus polyglottos</i>	X1	6/25/2000	Protected
Ovenbird	<i>Seiurus aurocapilla</i>	T2	6/9/2001	Protected
Pine Warbler	<i>Dendroica pinus</i>	FY	6/9/2001	Protected
Prairie Warbler	<i>Dendroica discolor</i>	P2	6/9/2001	Protected
Red-bellied Woodpecker	<i>Melanerpes carolinus</i>	T2	6/9/2001	Protected
Red-eyed Vireo	<i>Vireo olivaceus</i>	T2	6/9/2001	Protected
Red-tailed Hawk	<i>Buteo jamaicensis</i>	T2	6/9/2001	Protected
Red-winged Blackbird	<i>Agelaius phoeniceus</i>	P2	6/25/2000	Protected
Rock Pigeon	<i>Columba livia</i>	X1	6/25/2000	Unprotected
Scarlet Tanager	<i>Piranga olivacea</i>	X1	6/25/2000	Protected
Song Sparrow	<i>Melospiza melodia</i>	FY	6/9/2001	Protected
Tree Swallow	<i>Tachycineta bicolor</i>	X1	6/25/2000	Protected
Tufted Titmouse	<i>Baeolophus bicolor</i>	FL	6/25/2000	Protected
Veery	<i>Catharus fuscescens</i>	S2	6/25/2000	Protected
Wood Thrush	<i>Hylocichla mustelina</i>	T2	6/9/2001	Protected
Yellow Warbler	<i>Dendroica petechia</i>	T2	6/9/2001	Protected
Yellow-billed Cuckoo	<i>Coccyzus americanus</i>	X1	6/10/2000	Protected

Current Date: 7/1/2010

 NEW YORK STATE
DEPARTMENT OF
ENVIRONMENTAL CONSERVATION
NYS Breeding Bird Atlas



Block 6551B

2000-2005

Navigation Tools

[Perform Another Search](#)
[Show All Records](#)
[Sort by Field Card Order](#)
[Sort by Taxonomic Order](#)
[View 1985 Data](#)

Block 6551B Summary

Total Species:	31
Possible:	7
Probable:	10
Confirmed:	14

Click on column heading to sort by that category.

List of Species Breeding in Atlas Block 6551B

Common Name	Scientific Name	Behavior Code	Date	NY Legal Status
American Crow	<i>Corvus brachyrhynchos</i>	FL	6/7/2003	Game Species
American Robin	<i>Turdus migratorius</i>	FY	7/4/2003	Protected
Barn Swallow	<i>Hirundo rustica</i>	X1	9/4/2003	Protected
Black-capped Chickadee	<i>Poecile atricapillus</i>	FL	7/4/2003	Protected
Blue Jay	<i>Cyanocitta cristata</i>	FL	7/4/2003	Protected
Brown Thrasher	<i>Toxostoma rufum</i>	FY	7/4/2003	Protected
Brown-headed Cowbird	<i>Molothrus ater</i>	P2	6/7/2003	Protected
Carolina Wren	<i>Thryothorus ludovicianus</i>	T2	4/25/2003	Protected
Common Grackle	<i>Quiscalus quiscula</i>	FS	5/15/2004	Protected
Common Yellowthroat	<i>Geothlypis trichas</i>	X1	6/7/2003	Protected
Downy Woodpecker	<i>Picoides pubescens</i>	X1	4/7/2002	Protected
Eastern Kingbird	<i>Tyrannus tyrannus</i>	D2	6/7/2003	Protected
Eastern Towhee	<i>Pipilo erythrophthalmus</i>	T2	4/25/2003	Protected
European Starling	<i>Sturnus vulgaris</i>	FY	5/15/2004	Unprotected
Field Sparrow	<i>Spizella pusilla</i>	FL	7/4/2003	Protected
Fish Crow	<i>Corvus ossifragus</i>	X1	6/7/2003	Protected
Gray Catbird	<i>Dumetella carolinensis</i>	T2	6/7/2003	Protected
House Finch	<i>Carpodacus mexicanus</i>	T2	6/7/2003	Protected
House Sparrow	<i>Passer domesticus</i>	ON	4/7/2002	Unprotected
House Wren	<i>Troglodytes aedon</i>	X1	7/4/2003	Protected
Killdeer	<i>Charadrius vociferus</i>	X1	6/7/2003	Protected
Mourning Dove	<i>Zenaida macroura</i>	FL	7/4/2003	Protected
Northern Cardinal	<i>Cardinalis cardinalis</i>	FL	6/7/2003	Protected
Northern Flicker	<i>Colaptes auratus</i>	T2	7/4/2003	Protected
Northern Mockingbird	<i>Mimus polyglottos</i>	FY	5/15/2004	Protected
Pine Warbler	<i>Dendroica pinus</i>	T2	6/7/2003	Protected
Red-tailed Hawk	<i>Buteo jamaicensis</i>	X1	4/25/2003	Protected
Red-winged Blackbird	<i>Agelaius phoeniceus</i>	FY	7/4/2003	Protected

Rock Pigeon	<i>Columba livia</i>	NE	4/7/2002	Unprotected
Song Sparrow	<i>Melospiza melodia</i>	T2	4/25/2003	Protected
Tufted Titmouse	<i>Baeolophus bicolor</i>	T2	6/7/2003	Protected

**Transportation
Land Development
Environmental
Services**



VHB Engineering, Surveying and Landscape Architecture, P.C. | Affiliated with Vanasse Hangen Brustlin, Inc.

June 14, 2010

VIA CERTIFIED MAIL - RETURN RECEIPT REQUESTED

Ref: 27406.02

Ms. Tara Salerno
Information Services
New York Natural Heritage Program
New York State Department of
Environmental Conservation
625 Broadway, 5th Floor
Albany, New York 12233-4757

Re: Proposed Transit-Orientated Development
Hamlet of Ronkonkoma
Towns of Brookhaven and Islip
Suffolk County, New York

Dear Ms. Salerno:

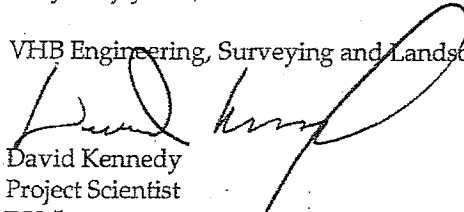
VHB Engineering, Surveying and Landscape Architecture, P.C. ("VHB") has been contracted by the Town of Brookhaven, New York to prepare a Draft Generic Environmental Impact Statement ("DGEIS") for the Land Use and Implementation Plan for the proposed Ronkonkoma Hub Transit-Oriented Development ("TOD"), the creation and adoption of the TOD zoning district and the rezoning of the project area to the TOD. The proposed TOD is an approximately 53.73±-acre area that includes the Long Island Railroad ("LIRR") - Ronkonkoma Train Station and other surrounding properties located within the Hamlet of Ronkonkoma, Towns of Brookhaven and Islip, Suffolk County, New York (see attached USGS Topographic map and aerial photograph).

In order to ensure that the DGEIS will address all significant issues, we are writing to ask whether there are any New York Natural Heritage Program records of rare plants, animals and/or natural communities or significant wildlife habitats on, or proximate to, the subject site.

Thank you for your cooperation in this matter. If additional information is required, or if you have any questions, please do not hesitate to contact the undersigned.

Very truly yours,

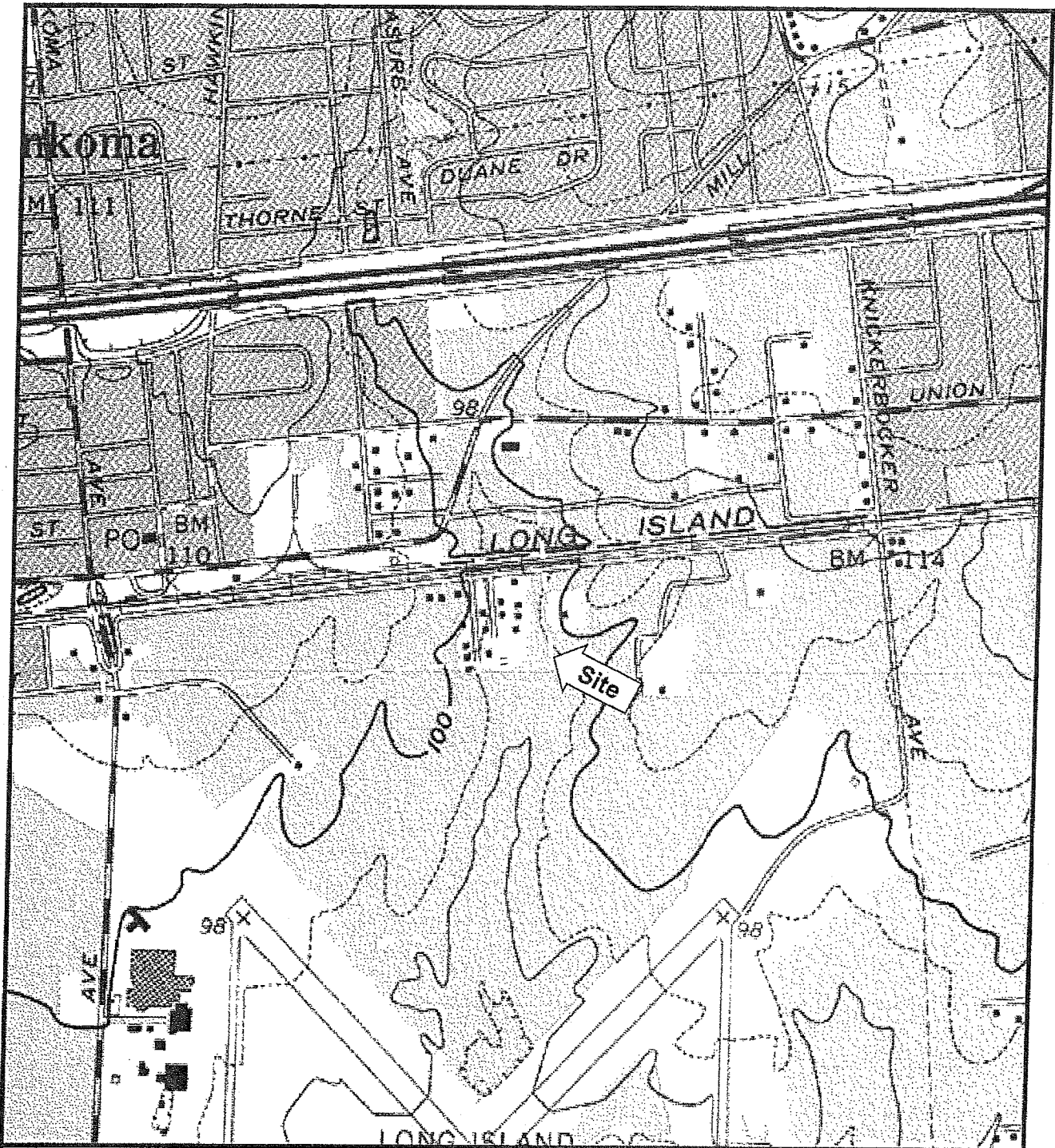
VHB Engineering, Surveying and Landscape Architecture, P.C.


David Kennedy
Project Scientist
DK/ba

enc.

J:\27406.02 RONKONKOMA PHASE 3\Proj\Records\FinalDocs\Salerno 6-14-10 NHP letter.docx

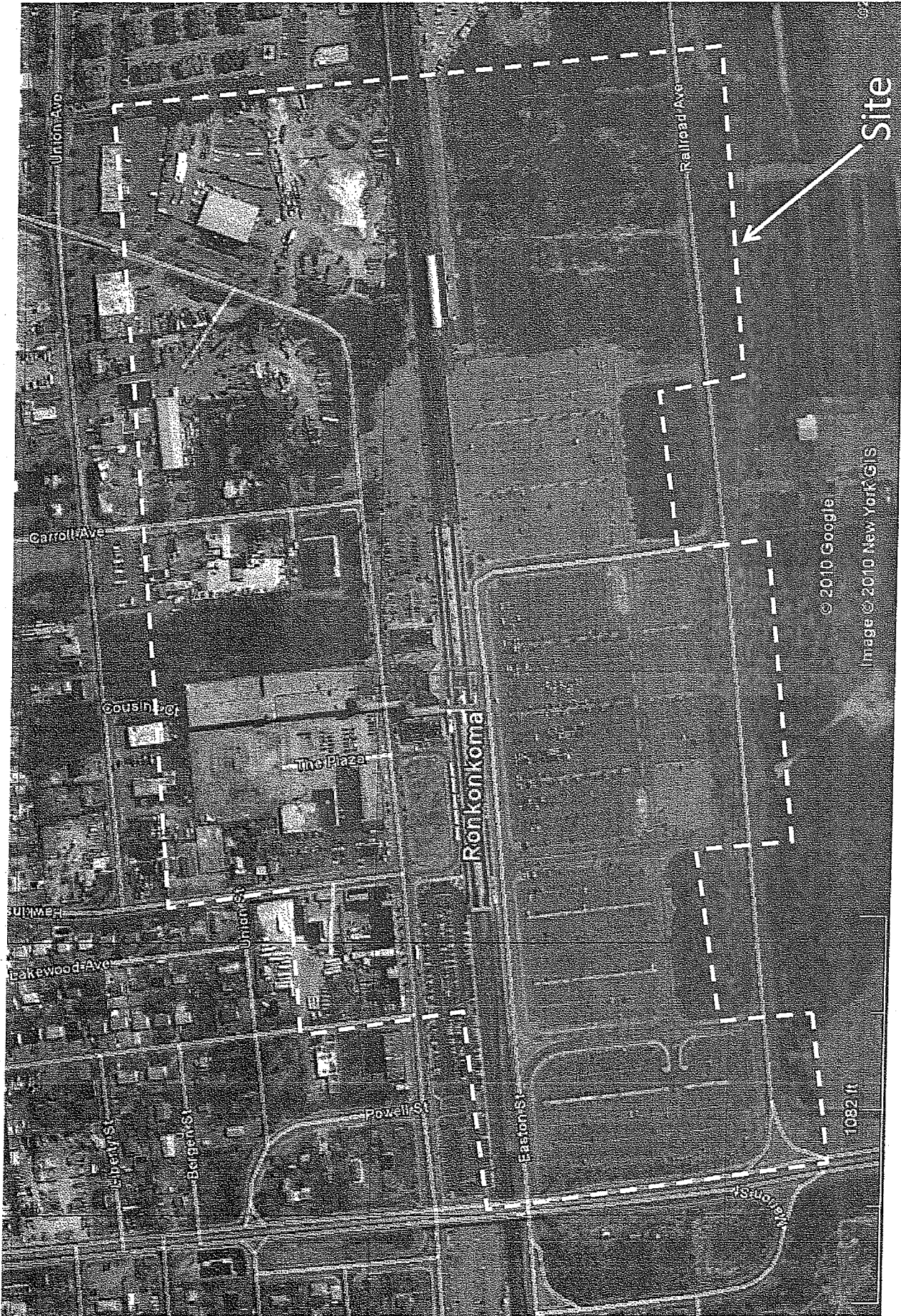
2150 Joshua's Path, Suite 300
Hauppauge, New York 11788
631.234.3444 • FAX 631.234.3477
email: info@vhb.com
www.vhb.com



EXCERPT OF USGS TOPOGRAPHIC MAP PATCHOGUE, NY QUADRANGLE

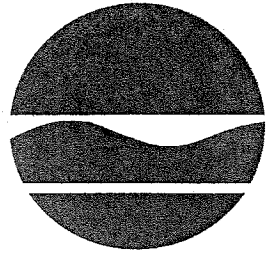
PROJECT: Ronkonkoma TOD
 MUNICIPALITY, STATE, ZIP: Ronkonkoma, New York 11783
 PROJECT NUMBER: 27406.02





Ronkonkoma TOD – Ronkonkoma, Suffolk County, New York

NEW YORK STATE DEPARTMENT OF ENVIRONMENTAL CONSERVATION
Division of Fish, Wildlife & Marine Resources
New York Natural Heritage Program
625 Broadway, 5th Floor, Albany, New York 12233-4757
Phone: (518) 402-8935 • **Fax:** (518) 402-8925
Website: www.dec.ny.gov



Alexander B. Grannis
Commissioner

June 30, 2010

David Kennedy
Vanasse Hangen Brustlin
2150 Joshuas Path, Suite 300
Hauppauge, NY 11788

Dear Mr. Kennedy:

In response to your recent request, we have reviewed the New York Natural Heritage Program database with respect to an Environmental Assessment for the proposed Ronkonkoma Hub Transit-Oriented Development – 53.73 Acres, area as indicated on the map you provided, located in the Towns of Brookhaven and Islip, Suffolk County.

Enclosed is a report of rare or state-listed animals and plants, significant natural communities, and other significant habitats, which our databases indicate occur, or may occur, on your site or in the immediate vicinity of your site. For most sites, comprehensive field surveys have not been conducted; the enclosed report only includes records from our databases. We cannot provide a definitive statement as to the presence or absence of all rare or state-listed species or natural communities. This information should not be substituted for on-site surveys that may be required for environmental impact assessment.

The enclosed report may be included in documents that will be available to the public. However, any enclosed maps displaying locations of rare species are considered sensitive information, and are intended only for the internal use of the recipient; they should not be included in any document that will be made available to the public, without permission from the New York Natural Heritage Program.

The presence of the plants and animals identified in the enclosed report may result in this project requiring additional review or permit conditions. For further guidance, and for information regarding other permits that may be required under state law for regulated areas or activities (e.g. regulated wetlands), please contact the appropriate NYS DEC Regional Office, Division of Environmental Permits, as listed at www.dec.ny.gov/about/39381.html.

Our databases are continually growing as records are added and updated. If this proposed project is still under development one year from now, we recommend that you contact us again so that we may update this response with the most current information.

Sincerely,


Tara Salerno, Information Services

New York Natural Heritage Program # 684

Enc.
cc: Reg. 1, Wildlife Mgr.

Natural Heritage Report on Rare Species and Ecological Communities



NY Natural Heritage Program, NYS DEC, 625 Broadway, 5th Floor,
Albany, NY 12233-4757
(518) 402-8935

~The information in this report includes only records entered into the NY Natural Heritage databases as of the date of the report. This report is not a definitive statement on the presence or absence of all rare species or significant natural communities at or in the vicinity of this site.

~Refer to the User's Guide for explanations of codes, ranks and fields.

~Location maps for certain species and communities may not be provided 1) if the species is vulnerable to disturbance, 2) if the location and/or extent is not precisely known, 3) if the location and/or extent is too large to display, and/or 4) if the animal is listed as Endangered or Threatened by New York State.

Natural Heritage Report on Rare Species and Ecological Communities



ASCULAR PLANTS

Eurybia spectabilis

Showy Aster

NY Legal Status: Threatened

NYS Rank: S2 - Imperiled

Office Use
9726

Federal Listing:

Global Rank: G5 - Secure

Last Report: 1991-09-10

EO Rank: Extant

County: Suffolk

Town: Islip

Location: MacArthur Airport

General Quality and Habitat: The plants are in the fields around the landing strips.

Liatris scariosa var. novae-angliae

Northern
Blazing-star

NY Legal Status: Threatened

NYS Rank: S2 - Imperiled

Office Use
9334

Federal Listing:

Global Rank: G5?T3 - Vulnerable

Last Report: 1991-09-10

EO Rank: Good

County: Suffolk

Town: Islip

Location: MacArthur Airport

General Quality and Habitat: There are 150-220 plants in a large artificial grassland. The plants are in fields around landing strips.

Sericocarpus linifolius

Flax-leaf Whitetop

NY Legal Status: Threatened

NYS Rank: S2 - Imperiled

Office Use
4910

Federal Listing:

Global Rank: G5 - Secure

Last Report: 1991-09-10

EO Rank: Extant

County: Suffolk

Town: Islip

Location: MacArthur Airport

General Quality and Habitat: The plants are in the fields around the landing strips.



3 Records Processed

More detailed information about many of the rare and listed animals and plants in New York, including biology, identification, habitat, conservation, and management, are available online in Natural Heritage's Conservation Guides at www.acris.nynhp.org, from NatureServe Explorer at <http://www.natureserve.org/explorer>, from NYSDEC at <http://www.dec.ny.gov/animals/7494.html> (for animals), and from USDA's Plants Database at <http://plants.usda.gov/index.html> (for plants).

More detailed information about many of the natural community types in New York, including identification, dominant and characteristic vegetation, distribution, conservation, and management, is available online in Natural Heritage's Conservation Guides at www.acris.nynhp.org. For descriptions of all community types, go to <http://www.dec.ny.gov/animals/29384.html> and click on Draft Ecological Communities of New York State.

Natural Heritage Report on Rare Species and Ecological Communities



NY Natural Heritage Program, NYS DEC, 625 Broadway, 5th Floor,
Albany, NY 12233-4757
(518) 402-8935

HISTORICAL RECORDS

The following plants and animals were documented in the vicinity of the project site at one time, but have not been documented there since 1979 or earlier.

There is no recent information on these plants and animals in the vicinity of the project site and their current status there is unknown. In most cases the precise location of the plant or animal in this vicinity at the time it was last documented is also unknown and therefore location maps are generally not provided.

If appropriate habitat for these plants or animals is present in the vicinity of the project site, it is possible that they may still occur there.

Natural Heritage Report on Rare Species and Ecological Communities



VASCULAR PLANTS

Lespedeza stuevei

Velvety
Bush-clover

NY Legal Status: Threatened

NYS Rank: S2 - Imperiled

Office Use
3860

Federal Listing:

Global Rank: G4? - Apparently secure

Last Report: 1928-09-11

EO Rank: Historical, no recent
information

County: Suffolk

M

Town: Islip

Location: Ronkonkoma

Directions: Ronkonkoma.

General Quality and Habitat: Dry pine barrens.

Linum medium var. texanum

Southern Yellow
Flax

NY Legal Status: Threatened

NYS Rank: S2 - Imperiled

Office Use
5488.

Federal Listing:

Global Rank: G5T5 - Secure

Last Report: 1925-09-23

EO Rank: Historical, no recent
information

County: Suffolk

M

Town: Brookhaven, Islip, Smithtown

Location: Ronkonkoma

Directions: Ronkonkoma.

General Quality and Habitat: Dry, sandy, oak woods.

Use
3800



Scleria pauciflora var. caroliniana

Few-flowered
Nutrush

NY Legal Status: Endangered
Federal Listing:
Last Report: 1922-09-25
County: Suffolk
Town: Brookhaven, Islip, Smithtown
Location: Ronkonkoma
Directions: Ronkonkoma.
General Quality and Habitat:

NYS Rank: S1 - Critically imperiled
Global Rank: G5T4T5 - Apparently secure
EO Rank: Historical, no recent information

Office Use
4847

M

Symphotrichum concolor var. concolor

Silvery Aster

NY Legal Status: Endangered
Federal Listing:
Last Report: 1928-09-20
County: Suffolk
Town: Brookhaven, Islip, Smithtown
Location: Ronkonkoma
Directions: Ronkonkoma.
General Quality and Habitat: Dry sandy barrens.

NYS Rank: S1 - Critically imperiled
Global Rank: G5T5 - Secure
EO Rank: Historical, no recent information

Office Use
7593

M

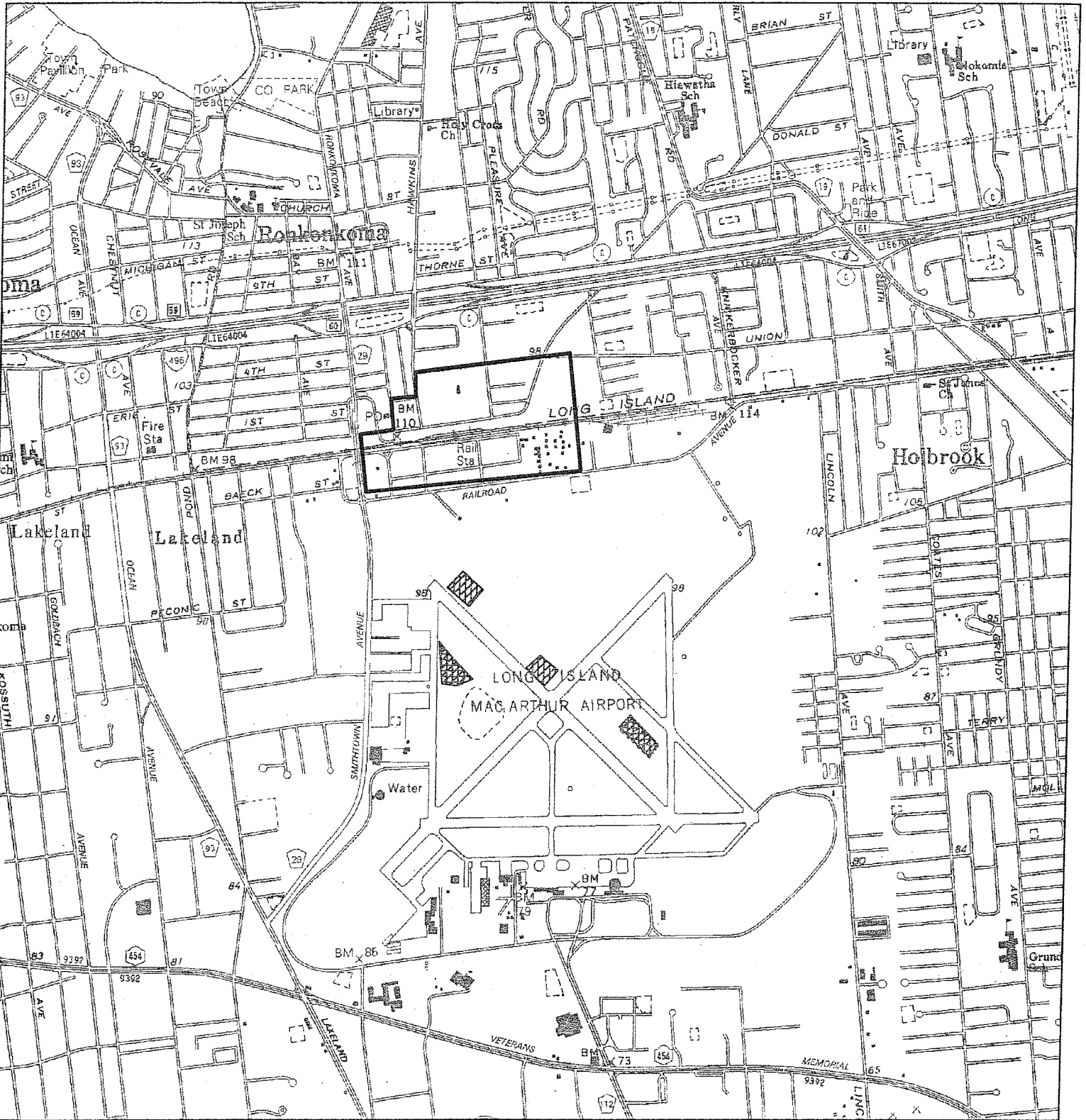
4 Records Processed

More detailed information about many of the rare and listed animals and plants in New York, including biology, identification, habitat, conservation, and management, are available online in Natural Heritage's Conservation Guides at www.acris.nynhp.org, from NatureServe Explorer at <http://www.natureserve.org/explorer>, from NYSDEC at <http://www.dec.ny.gov/animals/7494.html> (for animals), and from USDA's Plants Database at <http://plants.usda.gov/index.html> (for plants).

Use
05

Natural Heritage Map of Rare Species and Ecological Communities

Prepared June 17, 2010 by the NY Natural Heritage Program, NYS DEC Albany, NY

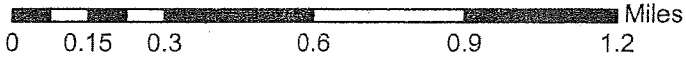


Legend

Project Site
 NY Natural Heritage Program Database Records

- Flax-leaf Whitetop
- Northern Blazing-star
- Showy Aster

1:24,000



This map, and the locations that are displayed, are considered sensitive information, and are intended for the internal use of the recipient; they should not be included in any document that will be made available to the public, without permission from NY Natural Heritage. Some records listed in the accompanying report may not be shown on this map. Please see the report for details.

USERS GUIDE TO NY NATURAL HERITAGE DATA

New York Natural Heritage Program, 625 Broadway, 5th Floor, Albany, NY 12233-4757 phone: (518) 402-8935



NATURAL HERITAGE PROGRAM: The NY Natural Heritage Program is a partnership between the NYS Department of Environmental Conservation (NYS DEC) and The Nature Conservancy. Our Mission is to facilitate the conservation of New York's biodiversity by providing comprehensive information and scientific expertise on rare species and natural ecosystems to resource managers and other conservation partners. We accomplish this mission by combining thorough field inventories, scientific analyses, expert interpretation, and the most comprehensive database on New York's distinctive biodiversity to deliver the highest quality information for natural resource planning, protection, and management.

DATA SENSITIVITY: The data provided in the report are ecologically sensitive and should be treated in a sensitive manner. The report is for your in-house use and should not be released, distributed or incorporated in a public document without prior permission from the Natural Heritage Program.

EO RANK: A letter code for the quality of the occurrence of the rare species or significant natural community, based on population size or area, condition, and landscape context.

- A-E = Extant: A=Excellent, B=Good, C=Fair, D=Poor, E=Extant but with insufficient data to assign a rank of A-D.
- F = Failed to find. Did not locate species during a limited search, but habitat is still there and further field work is justified.
- H = Historical. Historical occurrence without any recent field information.
- X = Extirpated. Field/other data indicates element/habitat is destroyed and the element no longer exists at this location.
- U = Extant/Historical status uncertain.
- Blank = Not assigned.

LAST REPORT: The date that the rare species or significant natural community was last observed at this location, as documented in the Natural Heritage databases. The format is most often YYYY-MM-DD.

NY LEGAL STATUS – Animals:

Categories of Endangered and Threatened species are defined in New York State Environmental Conservation Law section 11-0535. Animals listed as Endangered, Threatened, or Special Concern are protected against taking, importation, transportation, possession, or sale without a permit. Endangered, Threatened, and Special Concern species are listed in regulation 6NYCRR 182.5.

- E - Endangered Species:** any species which meet one of the following criteria:
 - Any native species in imminent danger of extirpation or extinction in New York.
 - Any species listed as endangered by the United States Department of the Interior, as enumerated in the Code of Federal Regulations 50 CFR 17.11.
- T - Threatened Species:** any species which meet one of the following criteria:
 - Any native species likely to become an endangered species within the foreseeable future in NY.
 - Any species listed as threatened by the U.S. Department of the Interior, as enumerated in the Code of the Federal Regulations 50 CFR 17.11.
- SC - Special Concern Species:** those species which are not yet recognized as endangered or threatened, but for which documented concern exists for their continued welfare in New York.
- P - Protected Wildlife** (defined in Environmental Conservation Law section 11-0103): wild game, protected wild birds, and endangered species of wildlife.
- U - Unprotected** (defined in Environmental Conservation Law section 11-0103): the species may be taken at any time without limit; however a license to take may be required.
- G - Game** (defined in Environmental Conservation Law section 11-0103): any of a variety of big game or small game species as stated in the Environmental Conservation Law; many normally have an open season for at least part of the year, and are protected at other times.

NY LEGAL STATUS – Plants:

The following categories are defined in regulation 6NYCRR part 193.3 and apply to NYS Environmental Conservation Law section 9-1503.

- E - Endangered Species:** listed species are those with:
 - 5 or fewer extant sites, or
 - fewer than 1,000 individuals, or
 - restricted to fewer than 4 U.S.G.S. 7 ½ minute topographical maps, or
 - species listed as endangered by U.S. Dept. of Interior, as enumerated in Code of Federal Regulations 50 CFR 17.11.
- T - Threatened:** listed species are those with:
 - 6 to fewer than 20 extant sites, or
 - 1,000 to fewer than 3,000 individuals, or
 - restricted to not less than 4 or more than 7 U.S.G.S. 7 and ½ minute topographical maps, or
 - listed as threatened by U.S. Department of Interior, as enumerated in Code of Federal Regulations 50 CFR 17.11.